



VILLARS | SUISSE

#ROAD BOOK

28 June 2025



UCI GRAVEL SUISSE
2025

INTRODUCTION

Dear Cycling friend,

For this 2nd edition, we have compiled all the information in a single document so that you can find out the essential details of the race.

For more detailed information, please consult our website in the [Gravel Regulations](#) section.

This will allow you to read it at your leisure and, if you have any questions, to email us at info@rd-cycling.com.

In the meantime, we wish you all the best for your preparations and look forward to seeing you in Villars.



CONTENT

WELCOME VILLAGE – VILLARS-SUR-OLLON	5-12
START AREA - AIGLE	13-14
ROUTES	16-18
REFRESHMENTS	20
REPATRIATION	21
FINISHER	22
PODIUMS	23
VOLUNTEERS	24
ALPES VAUDOISES	25-26
OUR EVENTS	27
CONTACT	28



THANK YOU !

OUR PARTNERS

OFFICIAL PARTNERS



TOURISM PARTNERS



ROUTES PARTNERS

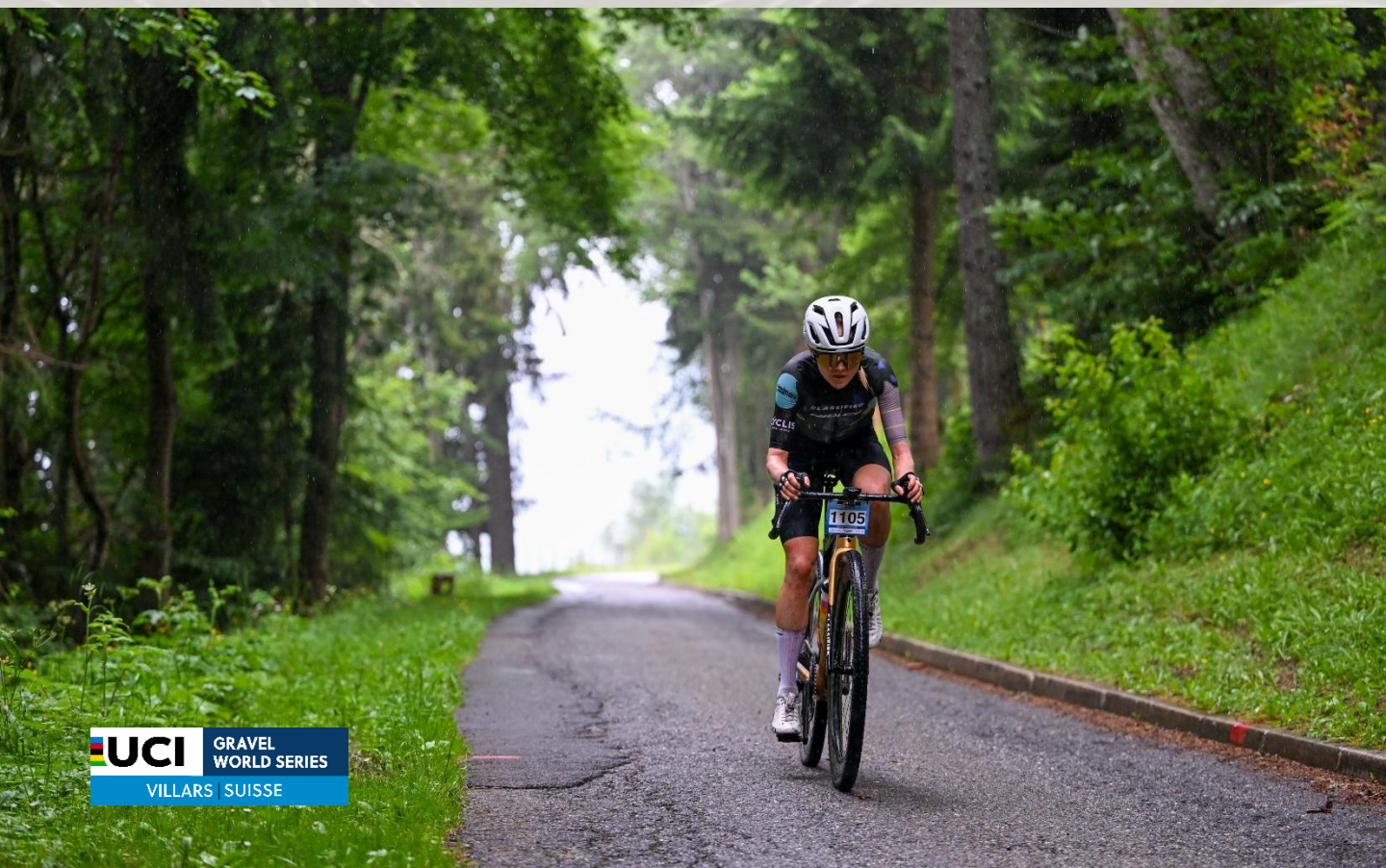


WELCOME VILLAGE VILLARS-SUR-OLLON

ACCESS & TRANSPORT

We recommend that you go to the **UCI Switzerland Village** in Villars-sur-Ollon (*bib collection and finish line*):

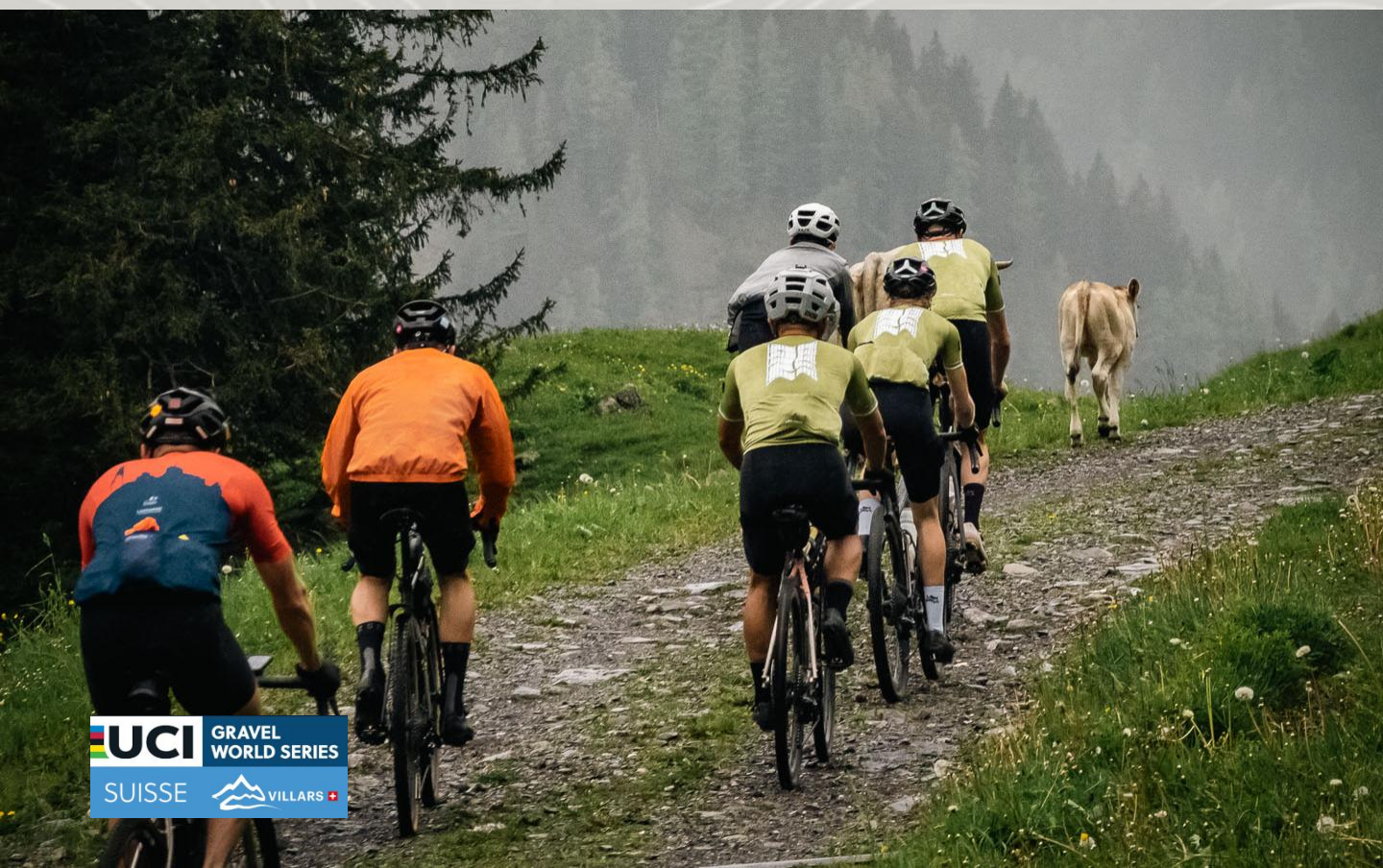
- By **train** : Find the timetable for your public transport connections in Switzerland on [CFF.ch](https://www.cff.ch). Please note that space for bicycles is limited and must be booked.
 - Must change at Aigle or Bex.
 - From Aigle station, connection with Villars by bus (TPC).
 - From Bex, connection to Gryon and Villars by BVB train (TPC).
- By **bus** : In summer, there are a number of inter-resort buses linking Villars, Gryon and Les Diablerets to the region's various must-see places.
 - Many of these services are included in the Welcome Card given free of charge to every guest in our resorts by their accommodation provider (if subject to payment of the tourist tax).
- By **car** : public car park nearby (please note that spaces are limited):
 - Place du Rendez-vous car park (Roc d'Orsay cable car) : 400 free spaces.



WELCOME VILLAGE VILLARS-SUR-OLLON

ACCESS & TRANSPORT

- Parking du Centenaire (opposite the station) : 110 paying spaces,
 - Access is limited to vehicles less than 2,10m high
- Roche-Grise car park : 60 free spaces
 - Paking is limited to 10 hours with a parking disc
- Route des Layeux car park (Eurotel Victoria) : free of charge
 - Paking is limited to 10 hours with a parking disc
- Route des Hôtels car park (Villars Experiences) : free of charge
 - Paking is limited to 10 hours with a parking disc
- In the Avenue Centrale, parking spaces are available close to the shops
 - These are chargeable and limited to 1 hour. Pay and display machines are located nearby.
- Parking du Central (under the Coop) : 93 pay spaces (underground) accessible 24/7
 - From 30 minutes to 1 hour : CHF 1.50
 - From 4h01 to 5h : CHF 25.-
 - From the 5th hour : CHF 8.-/additional hour
 - After the center closes (from 7pm to 8am) : CHF 1.50 / hour.



WELCOME VILLAGE VILLARS-SUR-OLLON

ACCESS & TRANSPORT

Location :

- [Parking du Rendez-vous](#) / Route du Roc, 1884 Villars-sur-Ollon

Opening hours of the exhibitors' village :

- Friday 27 june : 17h00-20h00
- Saturday 28 june : 10h00 – 18h00

Activities :

- Bib collection
- Finishes of all races
- Information stands and exhibitors
- Food and drink stalls
- Pasta party
- Storage of personal effects
- Podiums





Votre traiteur valaisan!

BTB SA *Raphaël Jordan & Simon Tornay*

📍 Rue de la Commune 5 | 1937 Orsières

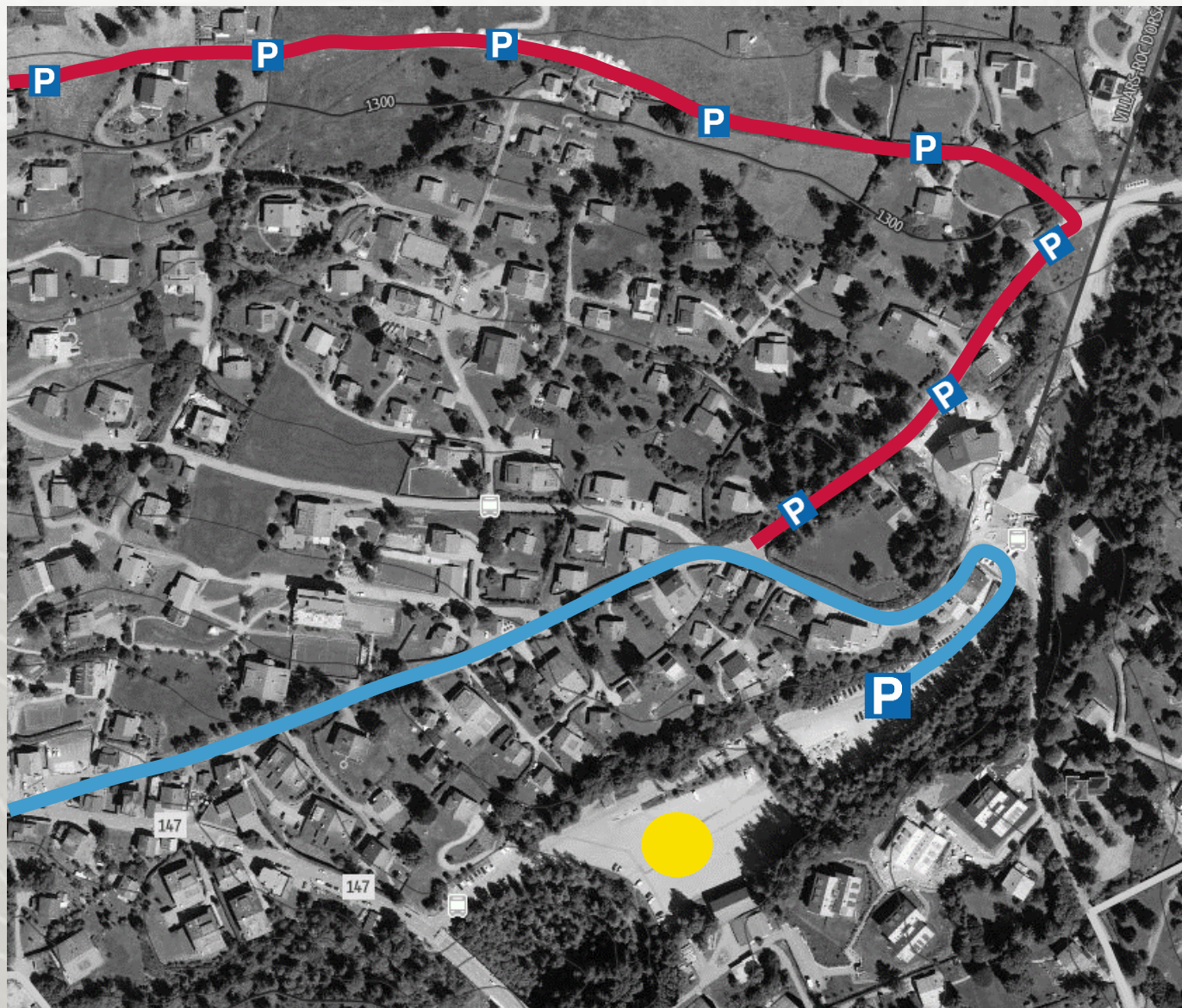
☎ +41 27 783 12 29 ✉ info@btb.swiss

🌐 www.btb.swiss



WELCOME VILLAGE VILLARS-SUR-OLLON

ACCESS & CAR PARK



Parking UCI Village Switzerland



Roadside car park (Chemin de Champex and Chemin des Margueronnes)



Access



UCI Village Switzerland

WELCOME VILLAGE VILLARS-SUR-OLLON

BIB NUMBERS COLLECTION

Key informations :

- You can collect your race numbers at the times below by presenting your collection voucher, which will be sent to you **two days before the race**, and your ID.
- All participants must collect their numbers in person. Exceptionally, if registration is full, the club president or a colleague may collect the number by presenting **the registration confirmation letter and a copy of the person's identity document**.
- All allocations of race numbers are firm and final. No race numbers or gifts will be sent by post.
- **Registration on site only on Friday and Saturday.**

Timetable :

• Friday 27 june :

- Villars-sur-Ollon | Place du Rendez-Vous
- **17h00-20h00** : Bib numbers collection

• Saturday 28 june :

- **Aigle | Centre Mondial du Cyclisme**
- **06h00-07h30** : **Late** Bib numbers collection

Busy Hours	Friday 5 July	Saturday 6 July
06h00 – 07h00		●
07h00 – 08h00		●
08h00 – 14h00		
14h00 – 15h00		
15h00 – 16h00		
16h00 – 17h00		
17h00 – 18h00	●	
18h00 – 19h00	●	
19h00 -20h00	●	

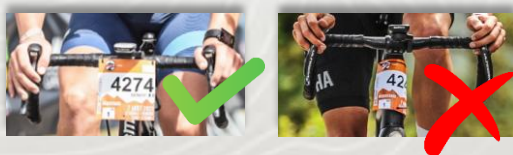
UCI VILLAGE SWITZERLAND

BIB NUMBERS COLLECTION

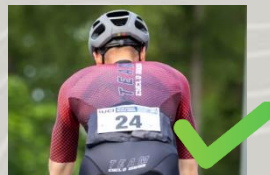
When the numbers are collected, each rider receives a frame plate and a number with two detachable vouchers :



To ensure timekeeping and photos, the frame plate must be fitted in this way.



The number must be worn on the back!



WELCOME VILLAGE VILLARS-SUR-OLLON

PERSONAL BELONGINGS & LOST PROPERTY

Personal belongings :

For all courses, you can leave your bag with your personal belongings at the start of the race in Aigle. You can then collect your belongings from the UCI Switzerland Village in Villars. To do this, you must affix the organisation's label to your bag and present your collection voucher to collect it.

Lost property :

We collect all lost items from the personal belongings stand at the UCI Village in Villars, which can be collected until Sunday 7.00 pm. After this date and time, you can contact us at the following e-mail address: info@rd-cycling.com.

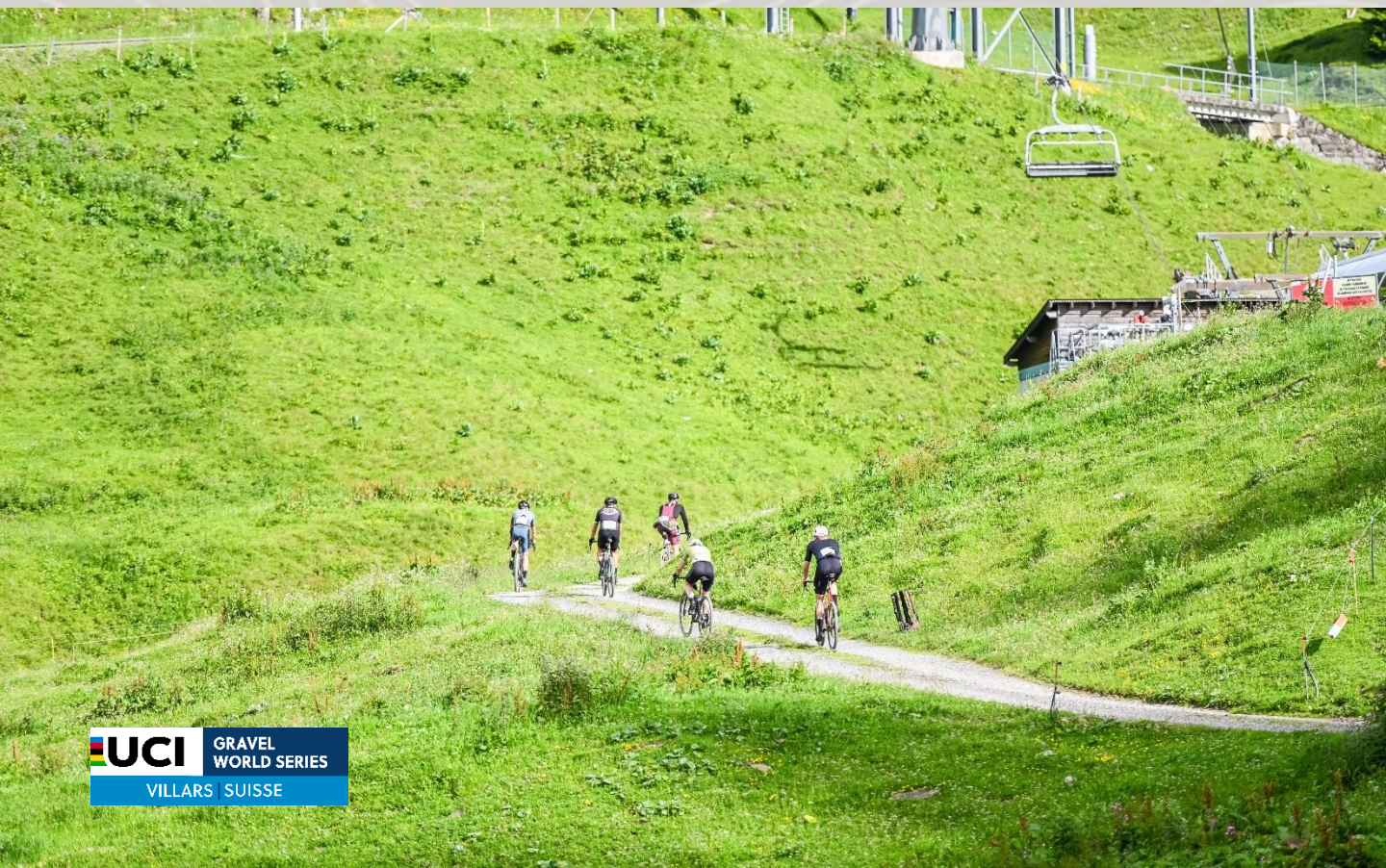


START AREA - AIGLE

Starts

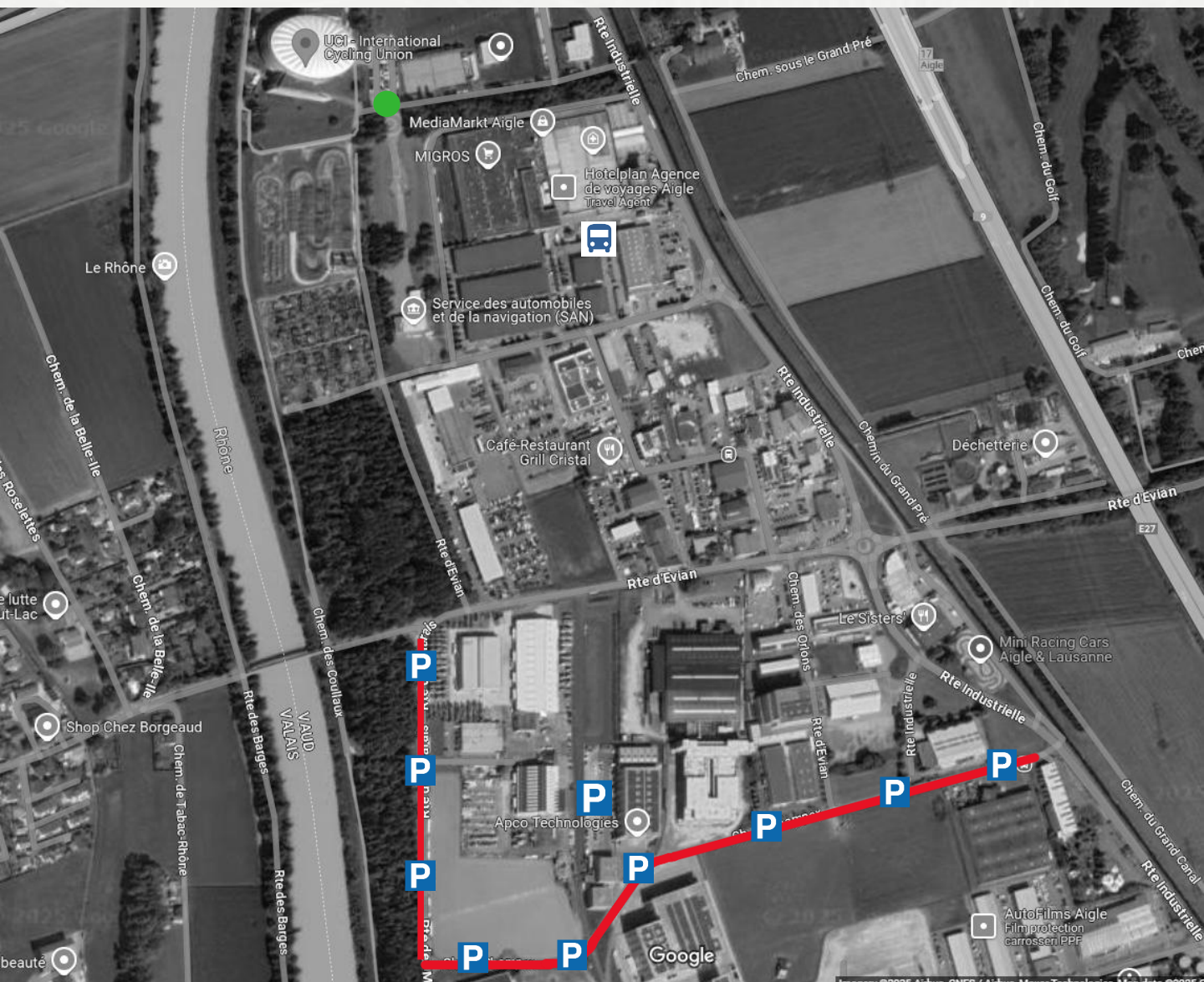
We recommend that you reach the start of the races at the UCI World Cycling Center in Aigle :

- By bike from your accommodation in the Villars-sur-Ollon area
- By **train** : Find your public transport connections in Switzerland on [CFF.ch](https://www.cff.ch). Please note that space for bicycles is limited.
 - Mandatory changeover to Aigle or Bex.
 - From Aigle station, about 40 minutes on foot / 10 minutes by bike (3 km).
 - Alternatively: take a cab or bus (lines 101, 102 or 103) to the "Aigle, Grand-Pré" stop (Migros shopping center), then walk or continue by cab.
- By **car** : A9 freeway → Aigle exit
- Long-term parking on Route des Marais. Follow the "Manifestation" signs.



START AREA - AIGLE

ACCESS & CAR PARK



-  Parking
-  Parking along the road (Chemin de Champex et Route des Marais)
-  Start zone
-  Bus stop « Aigle, Grand-Pré »

goodbye calories
hello vitamins



0 Zucker
Süßung



ROUTES

THE SUMMIT

DISTANCE

100 KM timed

107 KM in total

GRADIENT

3300mD+

over 5 climbs

DEPARTURE TIME

From 07:30

3 SAS

- Men Elite
- Women Elite
- Age Groups



FUEL STATIONS

- [Lavey](#) : 38KM
- [Barboleuse](#) : 64KM
- [Taveyanne](#) : 78KM



QUALIFICATIONS FOR THE UCI GRAVEL WORLD CHAMPIONSHIPS 2025

To play like the pros right to the end, finish in the top 25% of your age category (this only applies to men aged between 19 and 59 and women aged between 19 and 49) and qualify to compete for the coveted rainbow jersey at the 2025 UCI Gravel World Championships.

ROUTES

THE RIDGE

DISTANCE

74 KM timed

82 km in total

GRADIENT

2500mD+

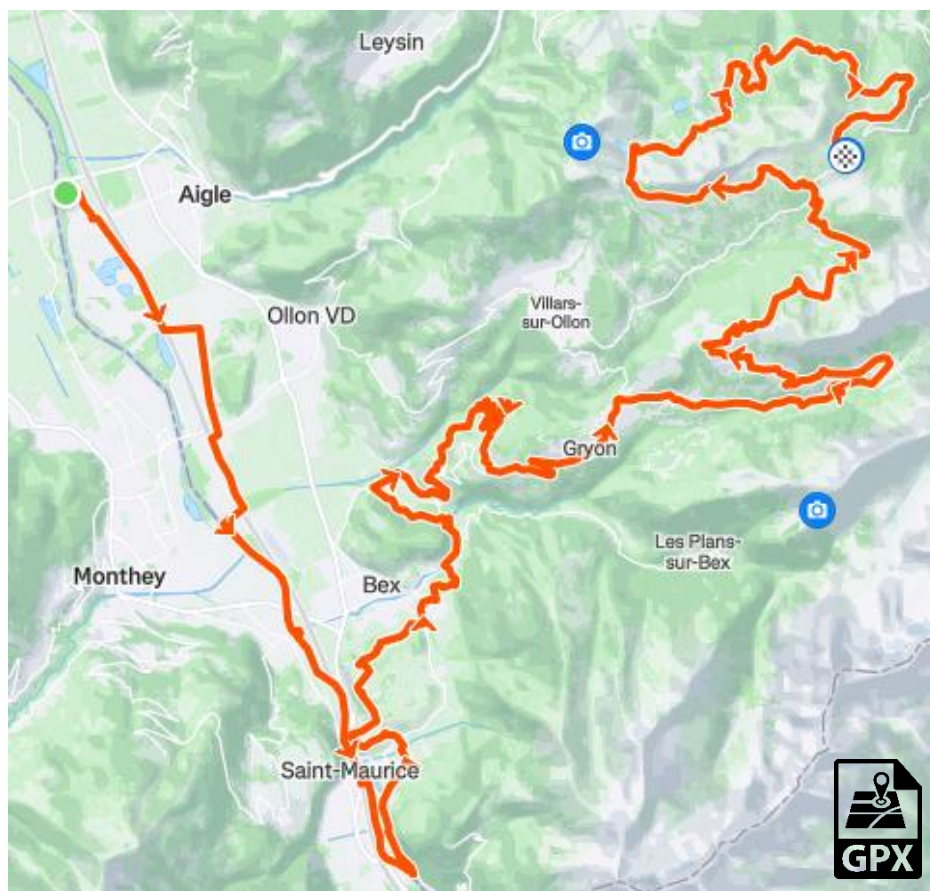
over 4 climbs

DEPARTURE TIME

07H45

Only 1 SAS

« First come, first served » principle.



RAVITAILLEMENTS

- [Lavey](#) : 17KM
- [Barboleuse](#) : 42KM
- [Taveyanne](#) : 57KM



QUALIFICATIONS FOR THE UCI GRAVEL WORLD CHAMPIONSHIPS 2025

To play like the pros right up to the end, finish in the top 25% of your age category (this only applies to men aged 60 and over and women aged 50 and over) and qualify to compete for the coveted rainbow jersey at the 2025 UCI Gravel World Championships.

ROUTES

MAIN CLIMBS & TIME LIMITS

Start	GPM	Starting altitude (m)	GPM altitude (m)	Gradient (mD+)	Distance (km)	Average gradient (%)	Maximum gradient (%)
Saint-Triphon	Salin	418	950	652	9	6,3	20
Route des Mines de Sel	Barboleuse	471	1207	780	13	5,7	17
Route de Solalex	Les Chaux	1234	1756	568	10,7	4,8	18
Taveyanne	Col de Bretaye	1580	1800	220	7	3,1	23
Route du col de la Croix	Col de la Croix	1660	1775	115	1,5	7,7	9

Checkpoints	Lavey	Solalex	Col de la Croix
BIG RIDE	10H00	13H00	16H30
SMALL RIDE			





[c]HAPPEE

brewed by the Alps

Domaines Rouvinez, Valais
Brasserie [c], Princ. de Liège

by Frédéric Rouvinez


ROUVINEZ
LES DOMAINES

Domaines Rouvinez - Colline de Gérond - Chemin des Bernardines 45 - 3960 Sierre
027 452 22 52 - www.rouvinez.com - info@rouvinez.com

D'une même passion pour la fermentation, les Brasseurs Liégeois de Curtius et la famille Rouvinez ont chacun laissé échapper une part de leurs compétences pour élaborer une bière parfaite à leurs palais.

Une levure d'ici, l'eau pure de là, un brin de connaissances mis en commun, et voici que naît une bière qui respire la passion.



AID STATIONS

SUMMARY

	Lavey	Barboleuse	Taveyenne	Col de la Croix	Villars-sur-Ollon
NOURRITURE					
Oranges et Bananas	X	X	X		
Waffles & Cake	X	X	X		
Chips & Crackers	X	X	X		
Cheese		X	X		
Bouillon			X	X	
Pasta					X
BOISSONS					
POWERBAR Isotonic Drink	X	X	X	X	
Water	X	X	X	X	
Coca-Cola	X	X	X	X	
FOCUS Water					X

PLEASE NOTE: 1 bar and 1 gel PEAKPUNK will only be given to you when you collect your number and NOT at the refreshment points. For reasons of sustainable development, you will have to fill your own water bottles throughout the course. No water bottles will be provided.

A special area will be set aside for personal refreshments, where your friends and family will be able to provide you with everything you need. However, no equipment will be made available on site, and it will not be possible to leave personal supplies in disposable bags when collecting race numbers. It is strictly forbidden to hand out personal refreshments outside these zones !



REPATRIATION

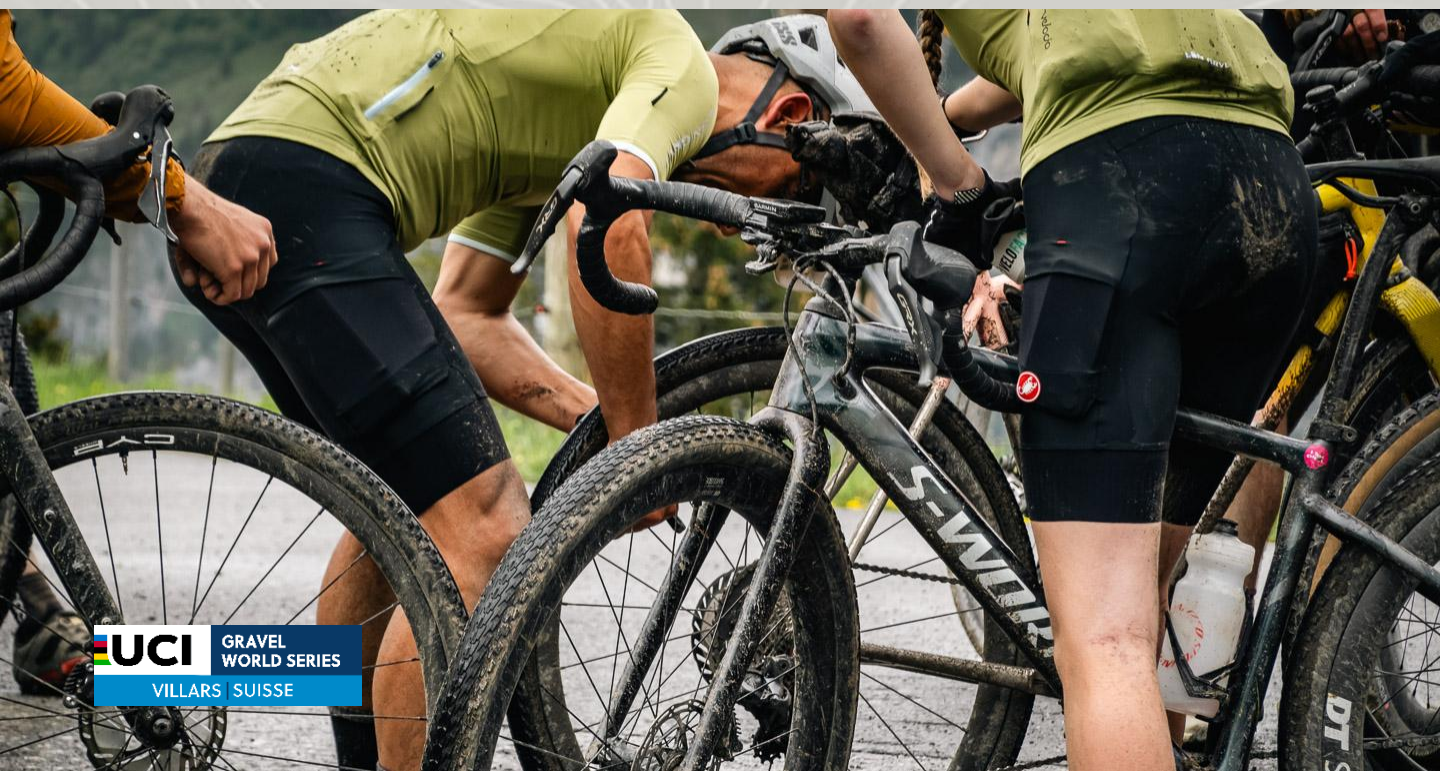
SUMMARY

If a participant wishes to retire, he or she must report to one of the checkpoints set up by the Organiser. They must then report to the person in charge of the checkpoint, who will take away their number and inform them of the means of repatriation. Any participant who suffers a fall, mechanical failure or physical impairment and who is unable to reach the nearest station by his or her own means must immediately notify the race management of his or her withdrawal by calling the **emergency number** given in the road book and on his or her race number : **+41 27 552 04 10**.

No mechanical assistance will be provided along the route. Refuelling points will be equipped with pumps and multitools for minor repairs.

The race finishers (broom wagon) will only deal with cases authorised by the race direction. Any participant caught by this mobile device will be disqualified from the race.

The medical service, made up of doctors, first-aiders and ambulances, may decide to withdraw a participant from the race for medical reasons.



FINISHER

Being a UCI GRAVEL SWITZERLAND finisher means :



A finish line at Col de la Croix



Potential qualification for the 2025 UCI Gravel World Championships



A pasta party at the UCI Village Switzerland



An area with showers and changing rooms close to the finish line ([centre des Sports de Villars](#)), accessible only on presentation of race number.



A runner's bag with various gifts



Prize-giving ceremony with a finisher's medal for each participant



Collection of your personal belongings at the finish



Tu You can check your results on the UCI Gravel Switzerland website : [UCI Gravel Suisse](#)



PODIUMS

Saturday : From 15H00

- The Summit

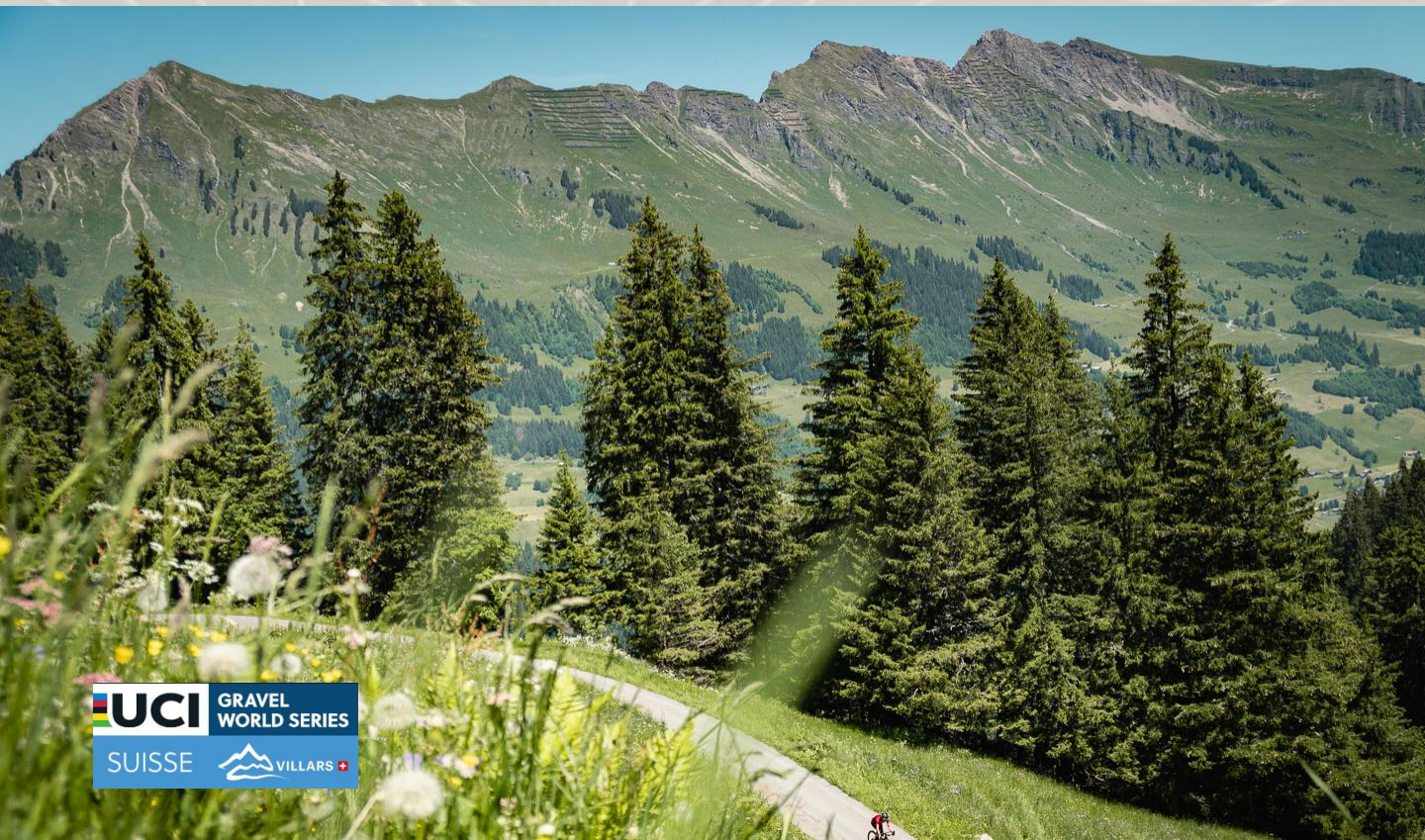
- Men Elite & Women Elite
- Men 19-34 & Women 19-34
- Men 35-39 & Women 35-39
- Men 40-44 & Women 40-44
- Men 45-49 & Women 45-49
- Men 50-54 & Women 50-54
- Men 55-59 & Women 55-59
- Men 60-64 & Women 60-64
- Men 65-69 & Women 65-69
- Men 70+ & Women 70+

- The Ridge

- Men 19-34 & Women 19-34
- Men 35-39 & Women 35-39
- Men 40-44 & Women 40-44
- Men 45-49 & Women 45-49
- Men 50-54 & Women 50-54
- Men 55-59 & Women 55-59
- Men 60-64 & Women 60-64
- Men 65-69 & Women 65-69
- Men 70+ & Women 70+

Categories eligible for qualification for the 2025 UCI Gravel World Championships are underlined and highlighted in bold.

Qualified participants will be able to get their medals at the information point after de podiums



VOLUNTEERS

Nearly 350 volunteers will be on hand at the *UCI Gravel Switzerland* to help you enjoy an exceptional event.

Without them, nothing would be possible. They are essential to the smooth running of the event. They'll be there to welcome you when you collect your number, at the start, at all the feed stations, at intersections along the route and at the finish.

Would you like to take part in the UCI Gravel Switzerland without any physical effort ? Register as a volunteer via our website : [UCI Gran Fondo Switzerland - Volundeers](#) or directly on qo-ezion at the following link : [QoEzion – Volunteer at the UCI Gran Fondo & Gravel Switzerland](#).



ALPES VAUDOISES

GRAVEL BIKING – ADVENTURE AROUND EVERY CORNER

The Alpes Vaudoises are the perfect playground for gravel biking, offering full immersion in the area's natural beauty, culinary delights and cultural heritage. Discover all their offers on the page [Alpes Vaudoises – Gravel Biking – Adventure Around Every Corner](#).

Take advantage of their 5 must-do routes to fine-tune your preparation for the UCI Gravel Suisse:

- [Le Col de la Croix en gravel \(49,2 km, 5h10, 1370 D+ - 1370 D-\)](#)
- [Autour de la vallée des Ormonts \(58km, 5h50, 1500 D+, 2330 D-\)](#)
- [Entre plaine et montagne en gravel \(32km, 2h10, 1150 D+, 1150 D-\)](#)
- [Le Grand Tour en gravel \(92,2km, 10h30, 3340 D+, 3340 D-\)](#)
- [Le tour du Chablais en gravel \(44,1km, 3h35h, 640 D+, 630 D-\)](#)



ALPES VAUDOISES

GRAVEL BIKING – ADVENTURE AROUND EVERY CORNER

Explore the world of Gravel in the Alpes Vaudoises

The Alpes Vaudoises don't just offer exceptional itineraries: they also offer a whole range of services to help you enjoy the gravel experience in the best possible conditions:

- [Gravel activities bookable online](#), including a guided outing with Swiss Cycling certified guide Lillie Rumpf.
- Gravel rental shops: [Mc Board](#), [Jacky Sports](#) and [Paragon Sport](#).
- [Bike Friendly hotels with dedicated facilities](#) (secure bike room, cleaning service, etc.).
- Take part in the [Challenge Strava Gravel Alpes Vaudoises](#) (June 1 to September 30) and try your luck at winning great prizes, including entry to the UCI Gravel Suisse 2026!

All information and links on the : [Alpes Vaudoises – Gravel Biking – Adventure Around Every Corner](#)



NEXT EVENTS

Valais Triathlon Festival

PRESENTING SPONSOR **bli bla blo**

TRIATHLON SERIES

HALF / OLYMPIC / SHORT
 DÉCOUVERTE / SWIMRUN / LA TRAVERSÉE / KIDS & FAMILY

16-17 AOÛT 2025
 SION ★ DOMAINE DES ÎLES

LE TOUR DES STATIONS

THE EVEREST OF CYCLING

SAMEDI 23 AOÛT 2025

ULTRAFONDO	SUPERFONDO	MARMOTTE GF	MEDIOFONDO
242KM 8'040MD+	105KM 6'000MD+	133KM 4'700MD+	74KM 2'050MD+

RAIFFEISEN | **QLE** | **ENERVIT** | **LOTTERIE ROMANDE** | *Le Nouvelliste* | **Rhône** | **9** | **RTS**

VERBIER | **OVRONNAZ** | **anzère** | **CHASSA MONTANA II** | **vercorin** | **NAX**

HEREMENCE | **THYON** | **VEYSONNAZ** | **NENDAZ** | **LA TZOUHAZ** | **SION**

CONTACT

/ Website

www.ucigravelsuisse.com

/ Social medias



[UCI Gravel Suisse](https://www.facebook.com/UCI-Gravel-Suisse)



[@uci_gravel_suisse](https://www.instagram.com/uci_gravel_suisse)

/ Contact



R&D Cycling

+41 27 552 04 14

info@rd-cycling.com

